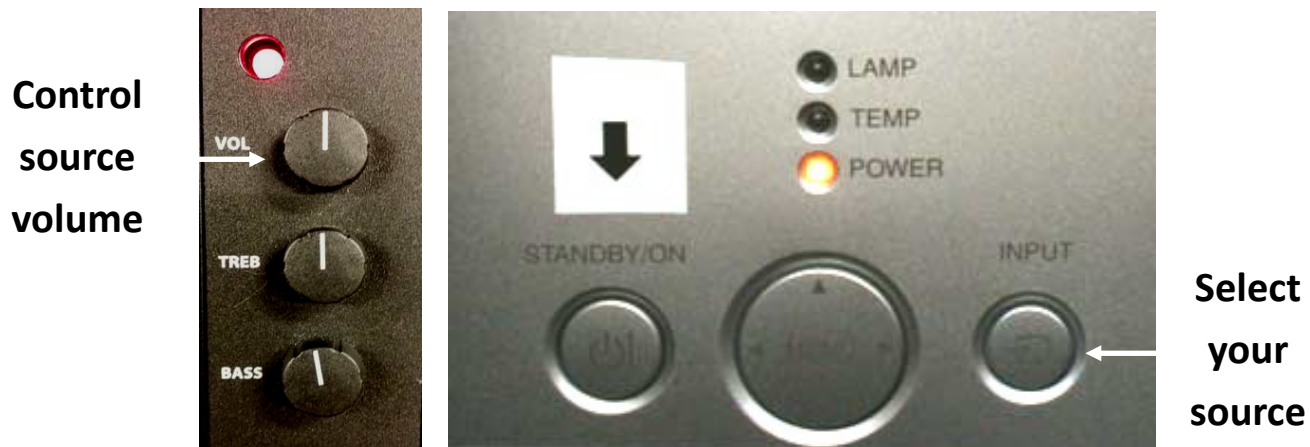


For immediate assistance call: 206-221-5000, Option 9

For general requests email: [help@uw.edu](mailto:help@uw.edu)

OR go to: [www.washington.edu/uwit/cte](http://www.washington.edu/uwit/cte)



### **Turn on the data projector:**

- 1) Press [Power]. The projector will begin to warm up, which will take about 60 seconds.
- 2) Press [Power] twice to turn off.

### **Adjust Volume:**

- 1) The volume dial on the speakers will control **ALL** your source materials.

### **Laptop:**

- 1) Connect the VGA cable to your laptop
- 2) Select [Input] and continue pressing to scroll through the source options until your source image appears

### **Blu-ray/DVD:**

- 1) Select [Input] until the source image appears
- 2) Use the controls to navigate the media as needed

### **Document Camera:**

- 1) Connect the VGA cable to the back of the document camera in the BLUE VGA output
- 2) Select [Input] until the source image appears
- 3) Use the controls to zoom and focus on your presentation material.

CTE may not support the use of personal audio/video or network devices. CTE does not warrant or guarantee that third-party audio/video or network devices will be compatible with the technology installed in this building. If you would like to test your personal equipment in this room, please contact our office to schedule an equipment tutorial. For more information, please visit: <http://goo.gl/NaTFkY>